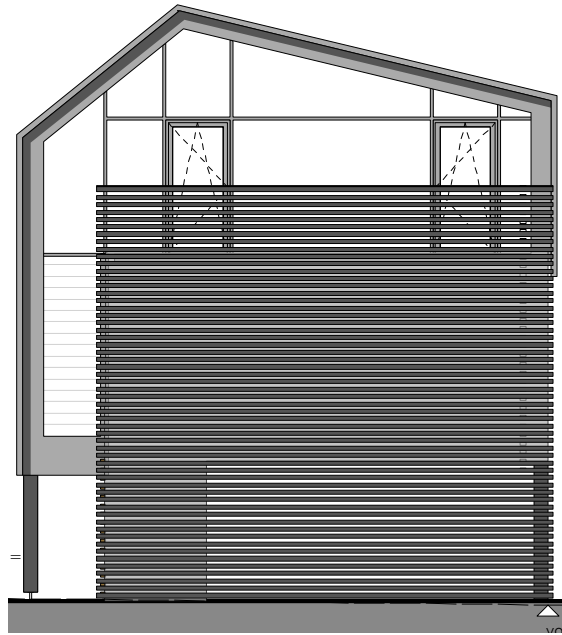
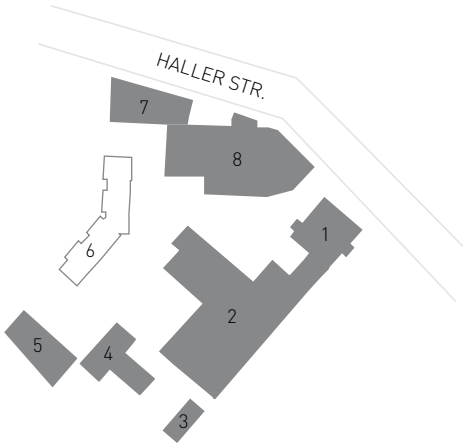
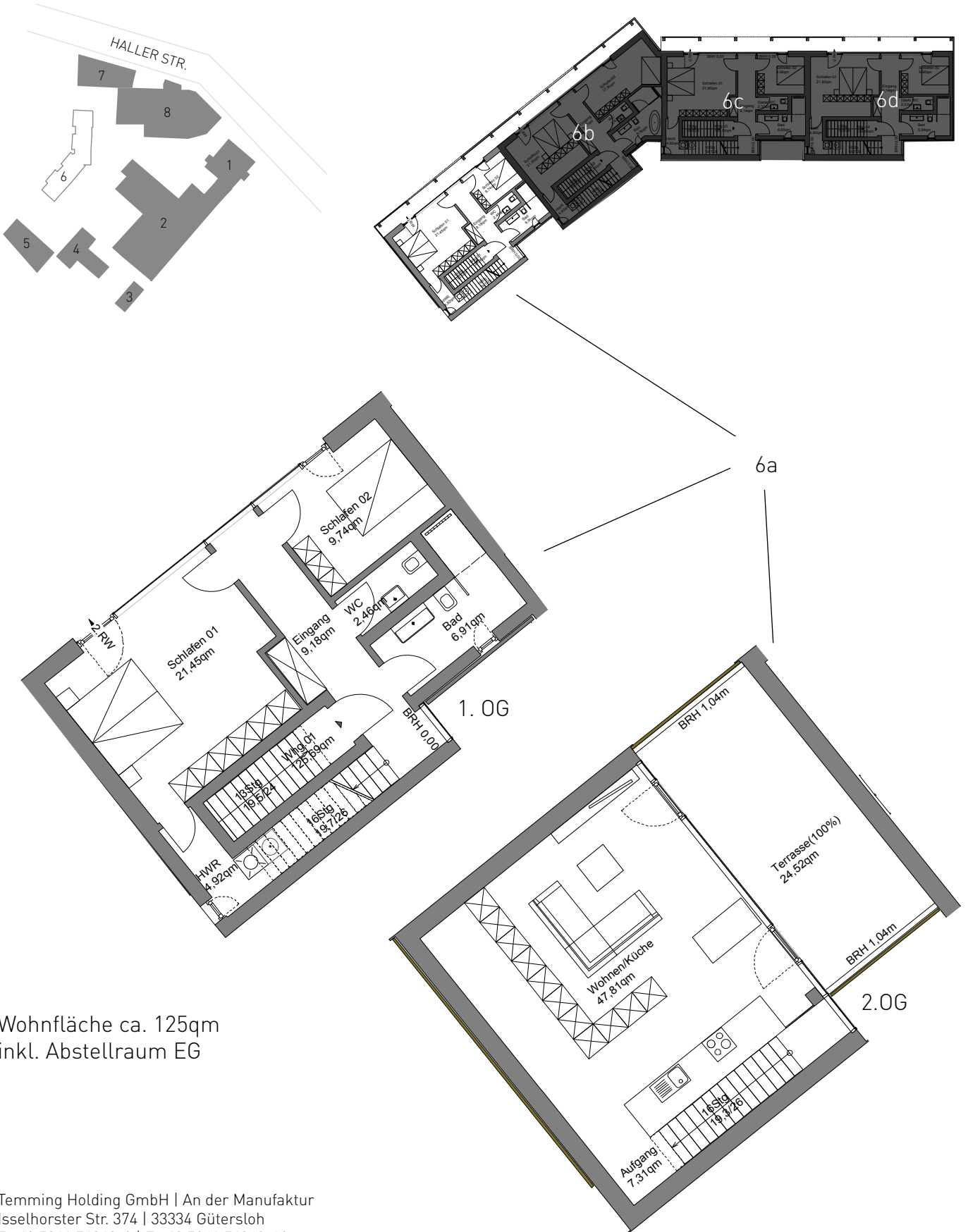
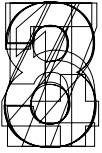


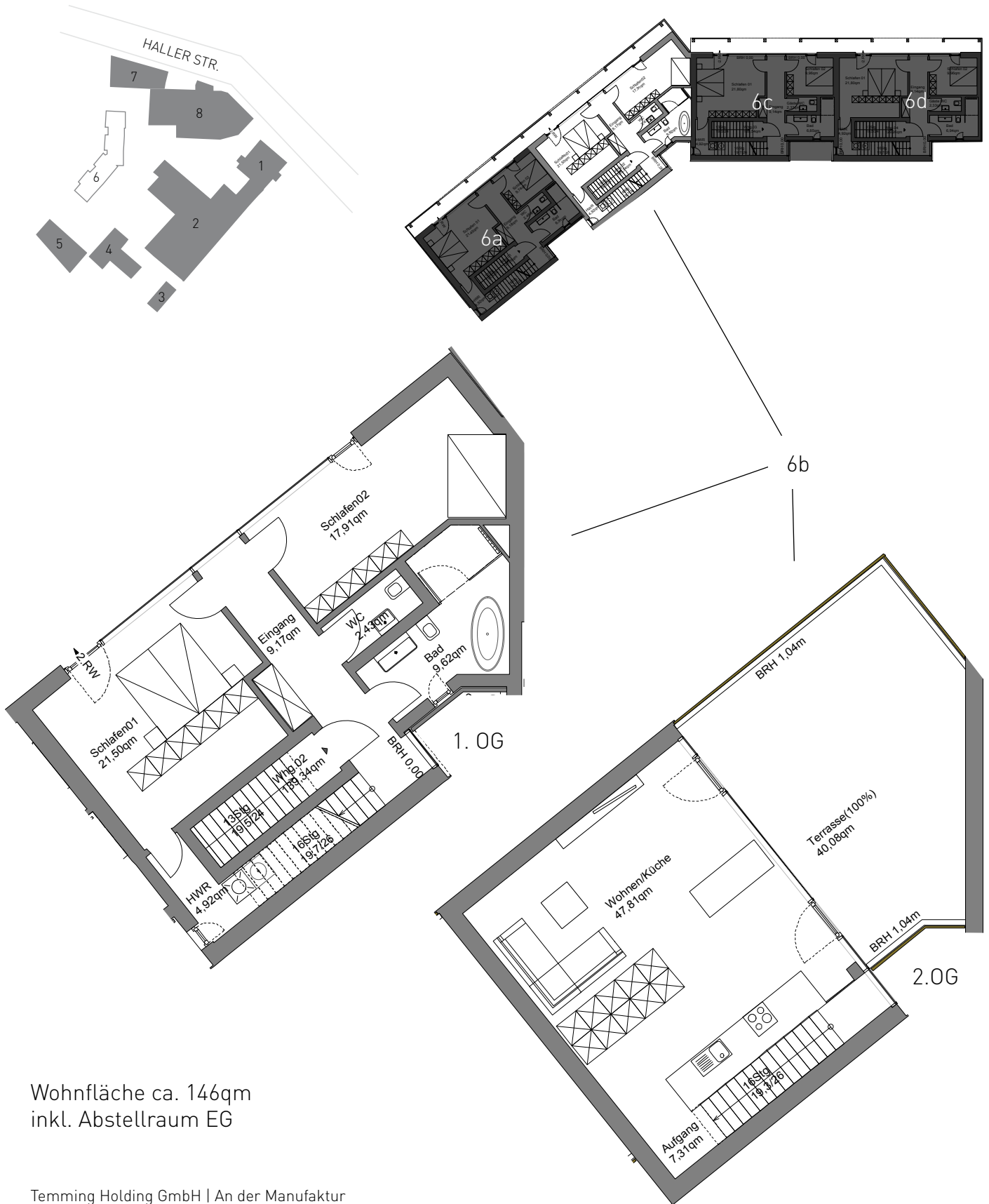
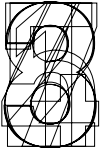
AN DER MANUFAKTUR

6 Alte Landwirtschaft
Neubau von vier Stadthäusern
Ansichten

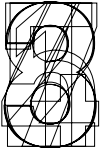




Wohnfläche ca. 125qm
 inkl. Abstellraum EG



Wohnfläche ca. 146qm
inkl. Abstellraum EG



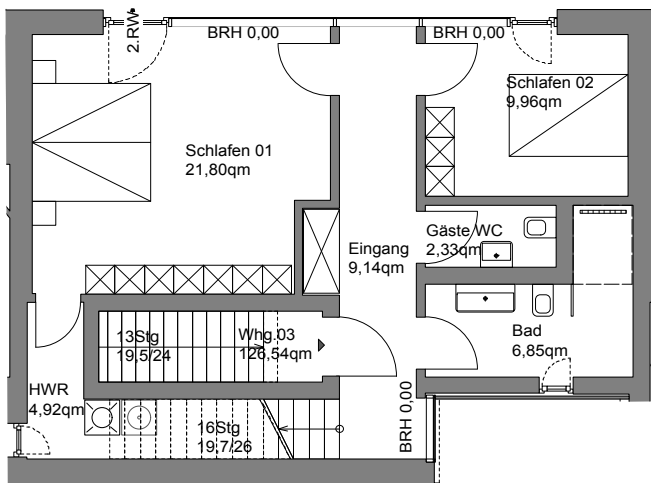
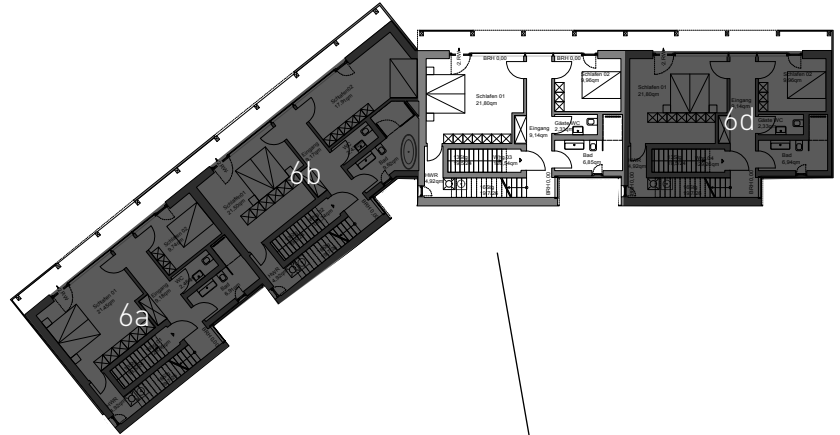
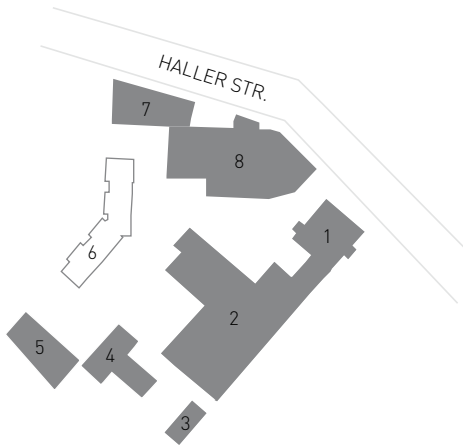
AN DER MANUFAKTUR

6 Alte Landwirtschaft

Neubau von vier Stadthäusern

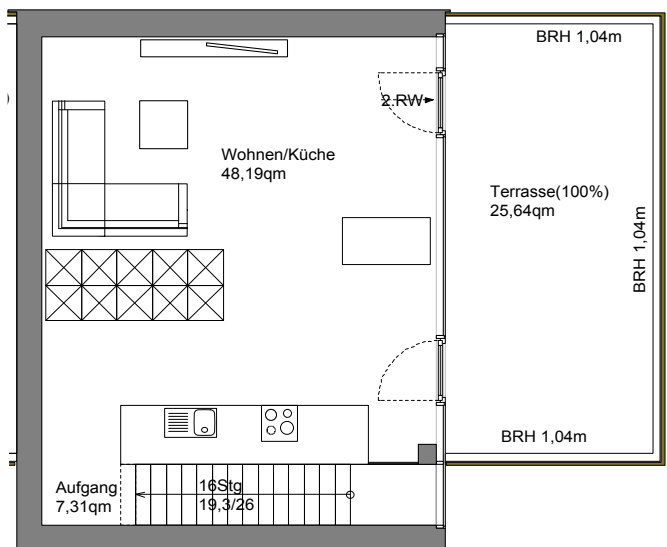
Wohneinheit 6c | 1. + 2.OG

Fertigstellung voraussichtlich Q1/2017

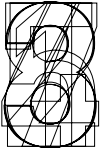


1. OG

Wohnfläche ca. 126qm
inkl. Abstellraum EG



2.OG



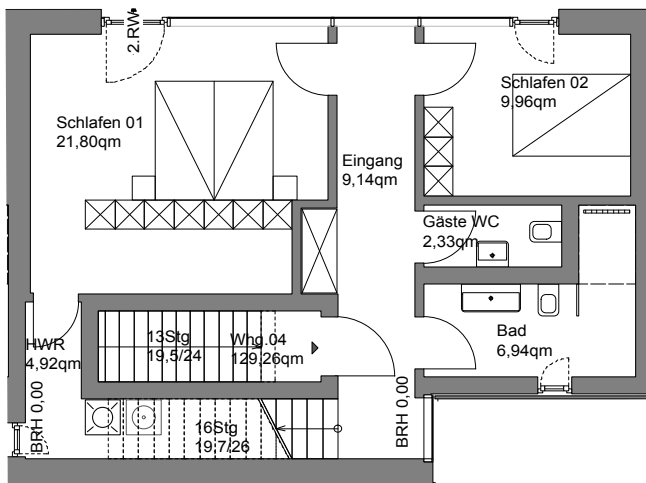
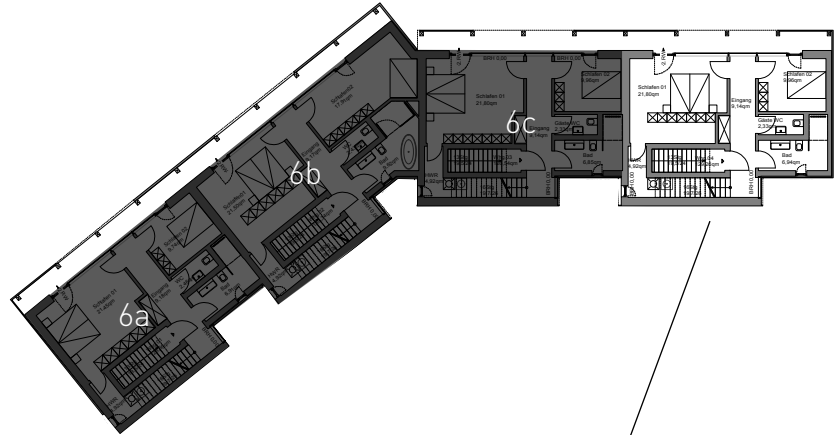
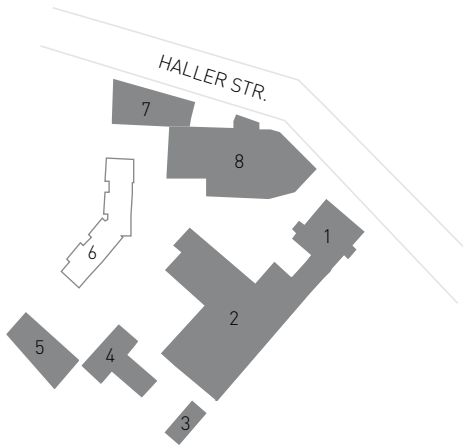
AN DER MANUFAKTUR

6 Alte Landwirtschaft

Neubau von vier Stadthäusern

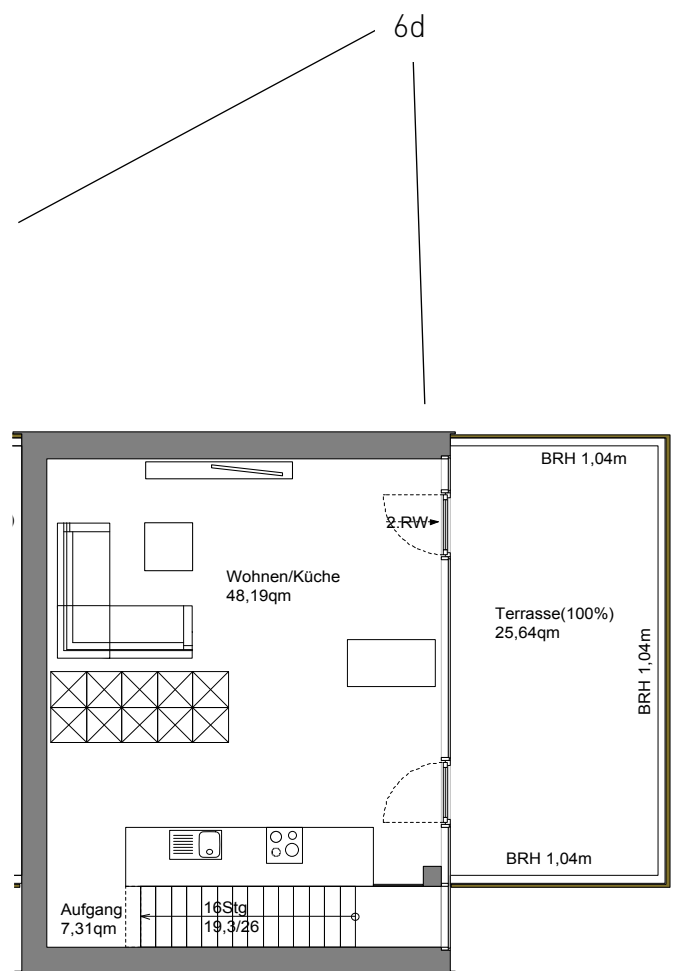
Wohneinheit 6d | 1. + 2.OG

Fertigstellung voraussichtlich Q1/2017



1. OG

Wohnfläche ca. 129qm
inkl. Abstellraum EG



2.OG