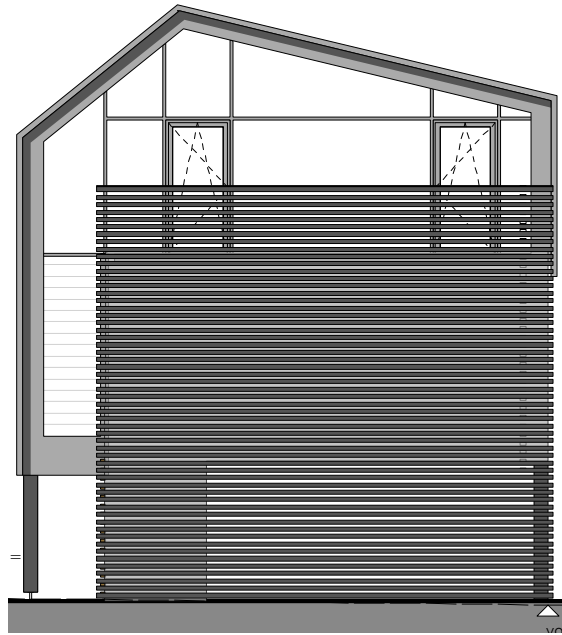
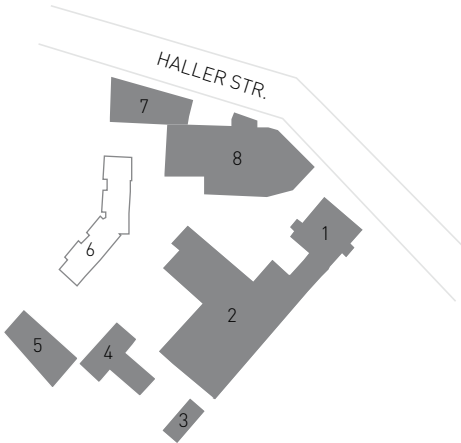
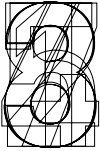


# AN DER MANUFAKTUR

6 Alte Landwirtschaft  
Neubau von vier Stadthäusern  
Ansichten





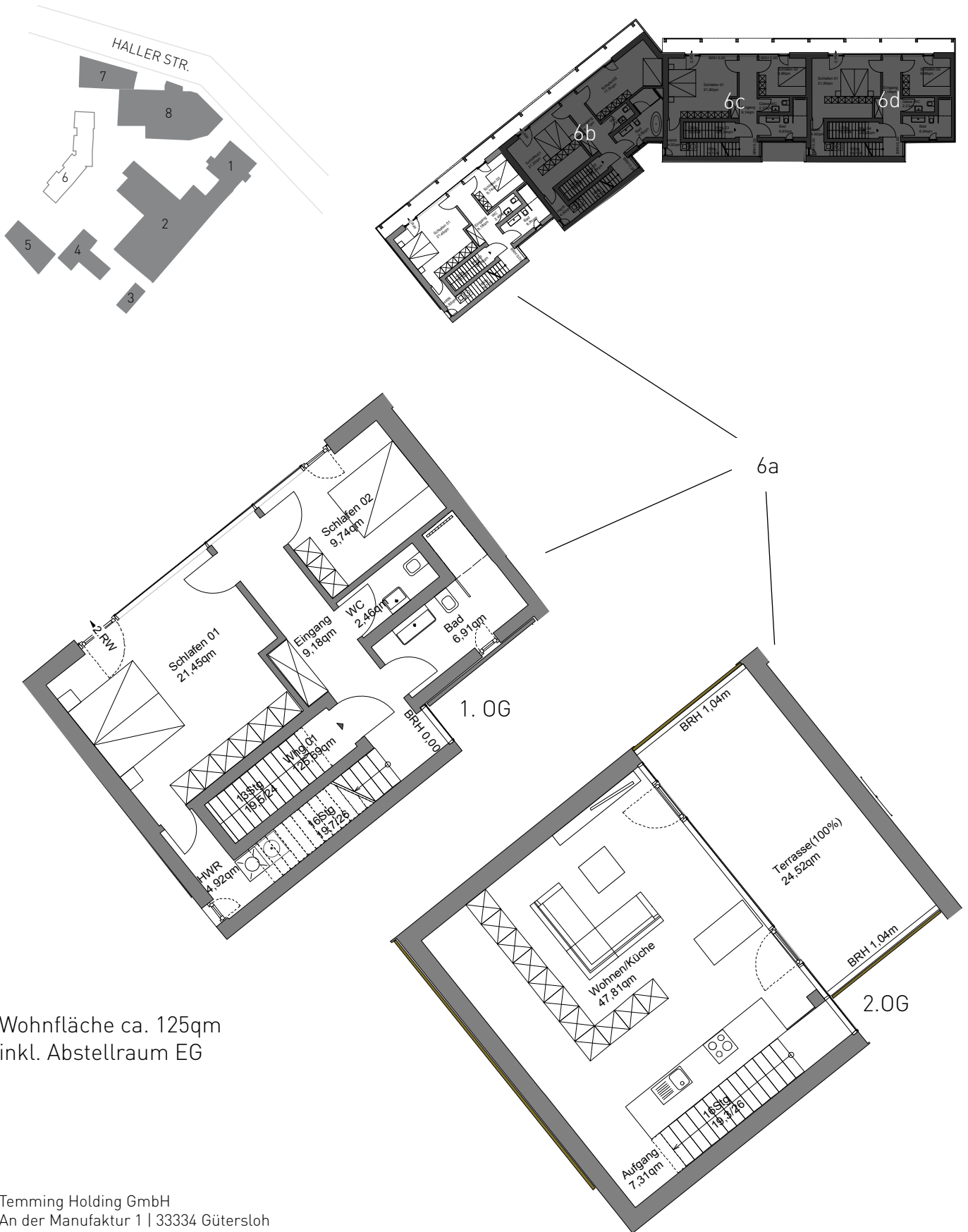
# AN DER MANUFAKTUR

6 Alte Landwirtschaft

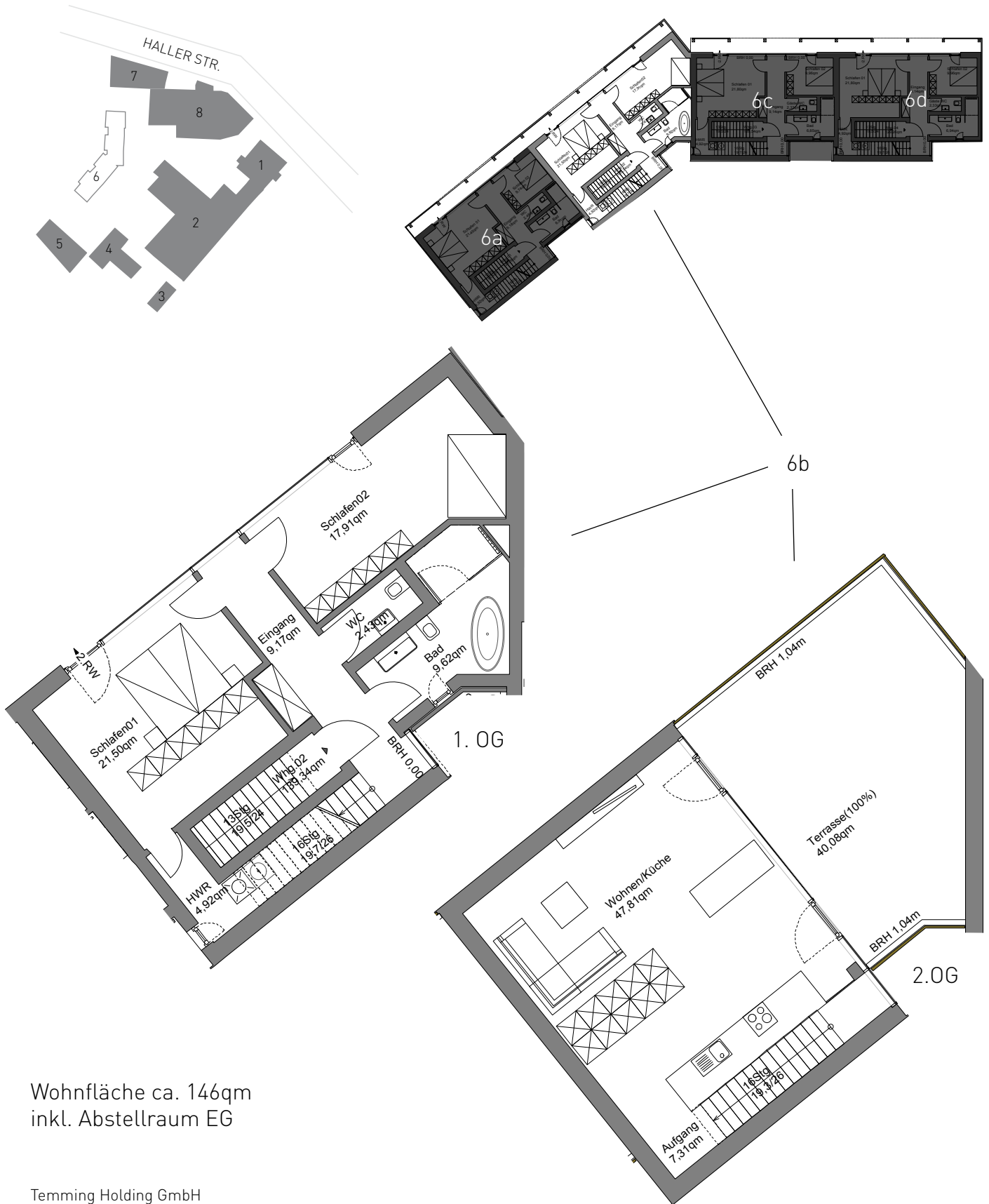
Neubau von vier Stadthäusern

Wohneinheit 6a | 1. + 2.OG

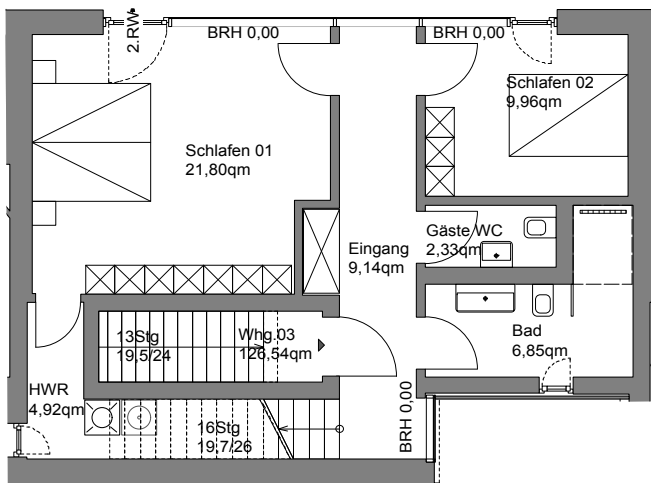
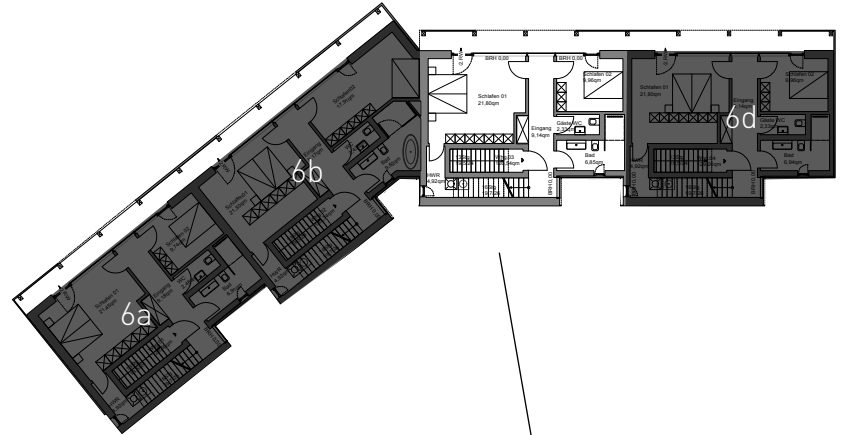
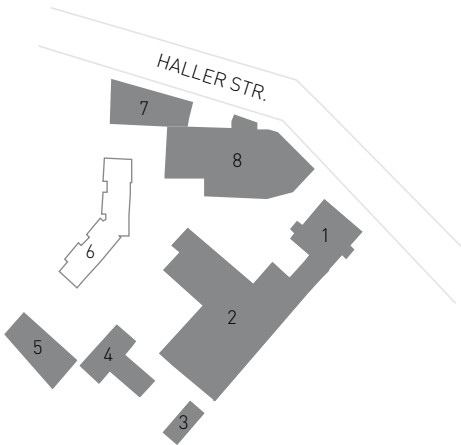
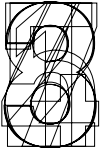
Fertigstellung voraussichtlich Q3/2017



Wohnfläche ca. 125qm  
inkl. Abstellraum EG

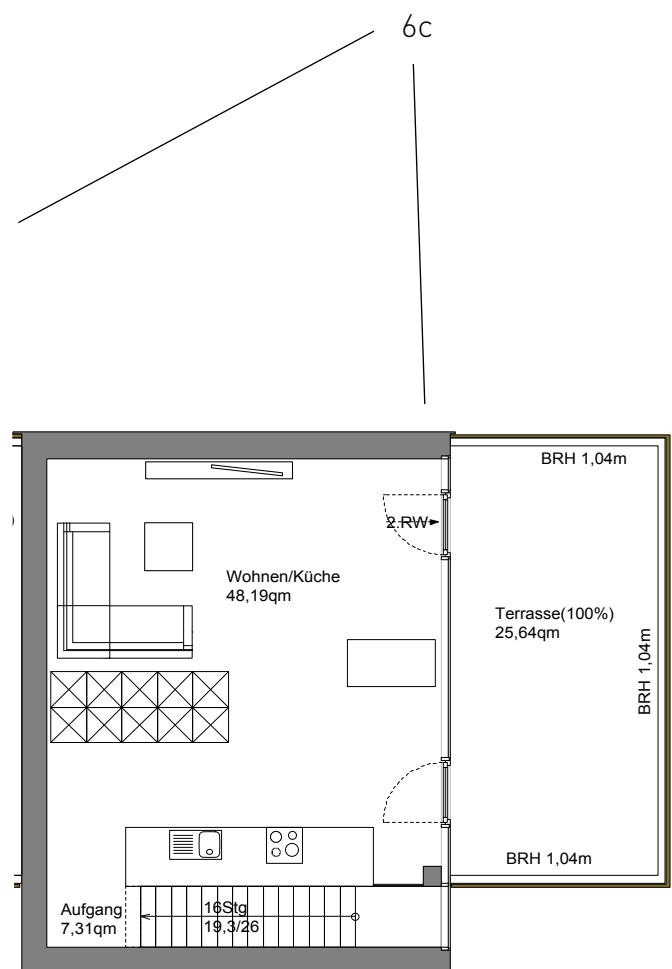


Wohnfläche ca. 146qm  
inkl. Abstellraum EG

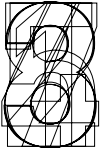


1. OG

Wohnfläche ca. 126qm  
inkl. Abstellraum EG



2. OG



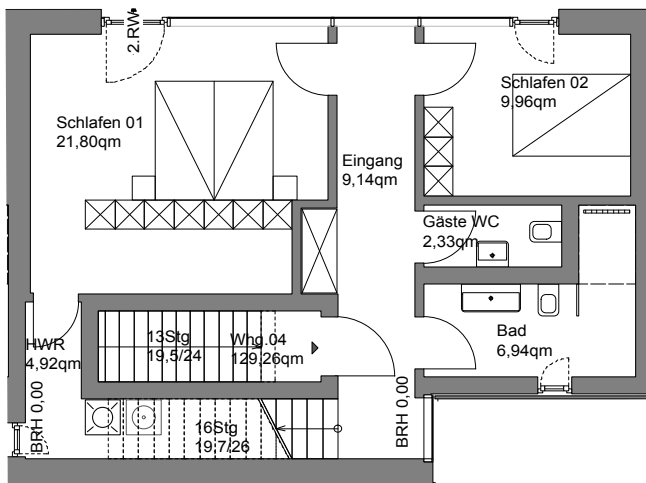
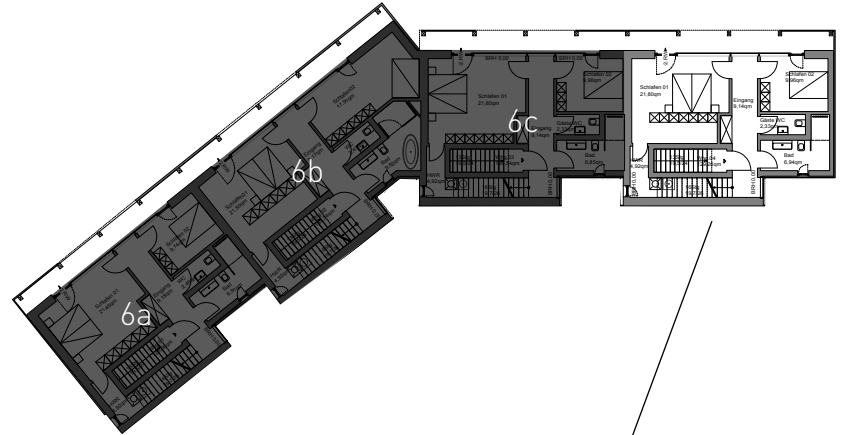
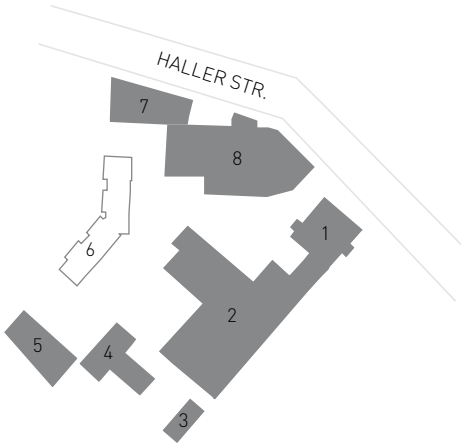
# AN DER MANUFAKTUR

6 Alte Landwirtschaft

Neubau von vier Stadthäusern

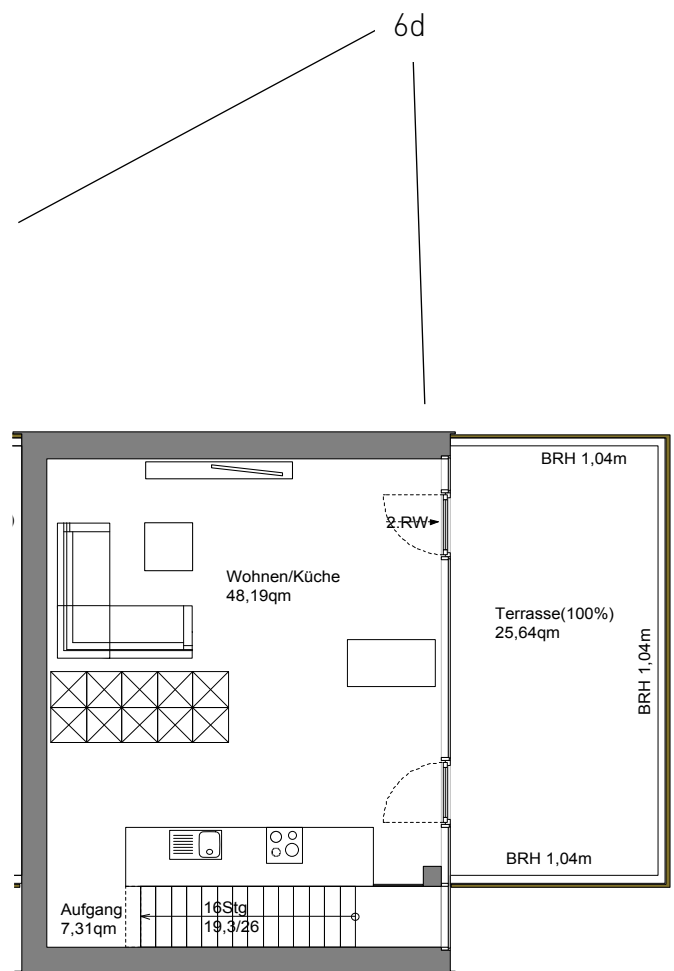
Wohneinheit 6d | 1. + 2.OG

Fertigstellung voraussichtlich Q3/2017



1. OG

Wohnfläche ca. 129qm  
inkl. Abstellraum EG



2.OG