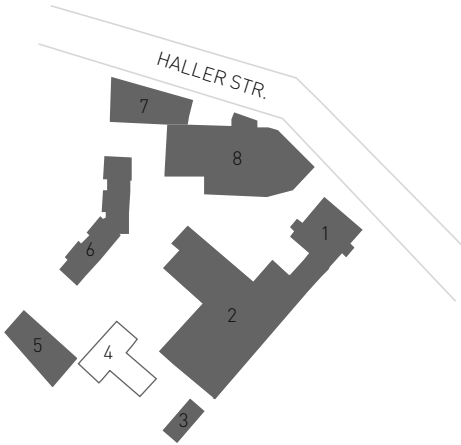


AN DER MANUFAKTUR

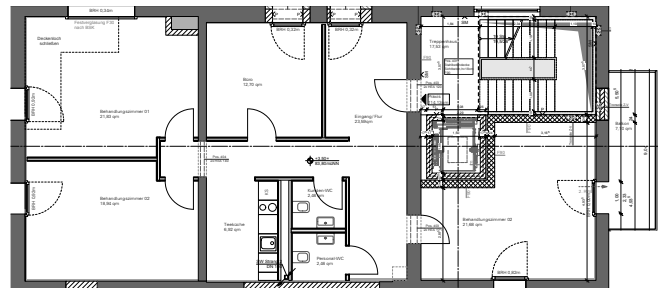
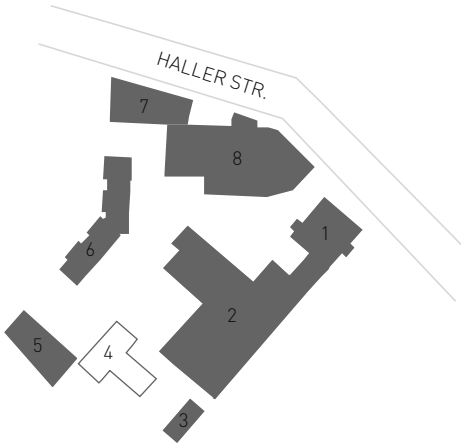
4 Lehrlingsbrennerei
Sanierung Denkmal
Nord- und Westansicht



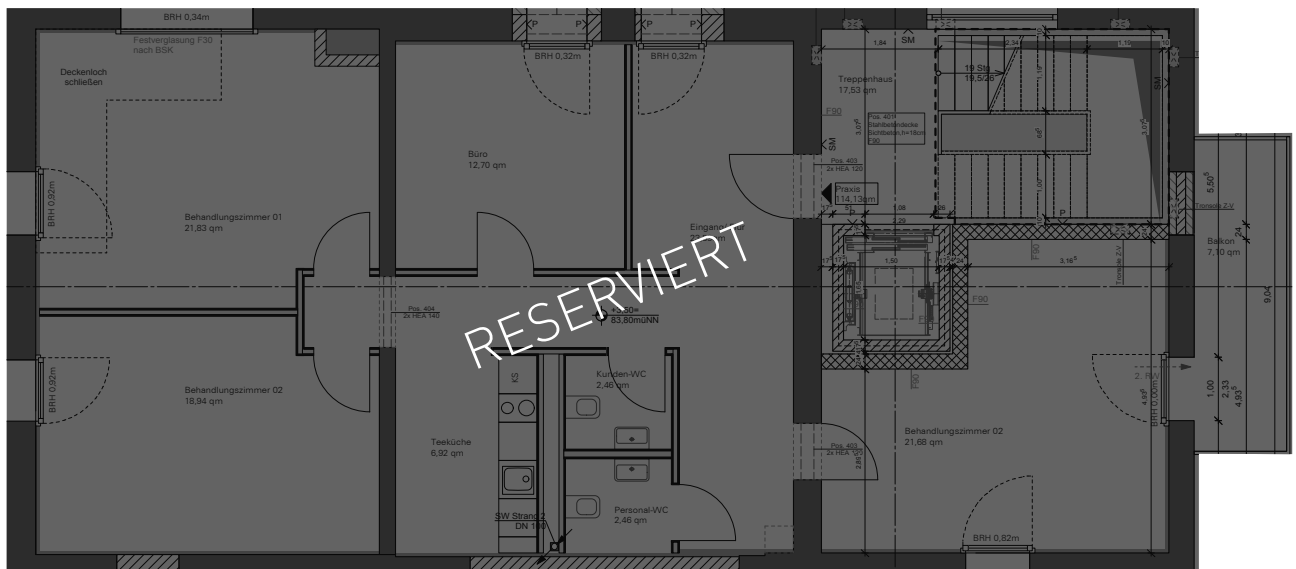
WESTANSICHT



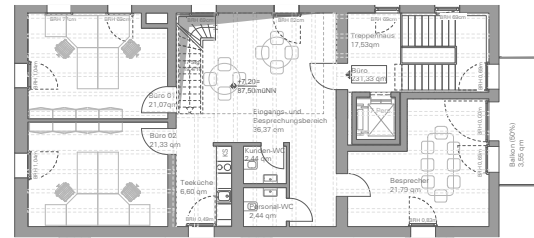
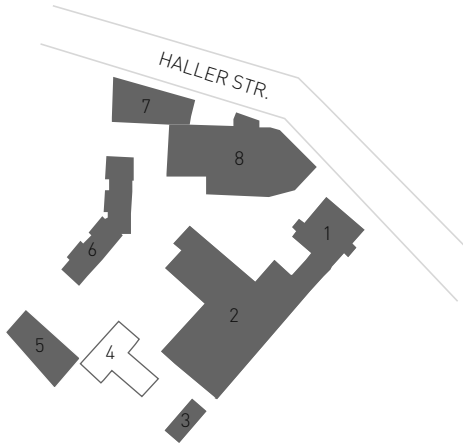
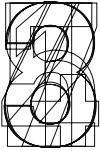
NORDANSICHT



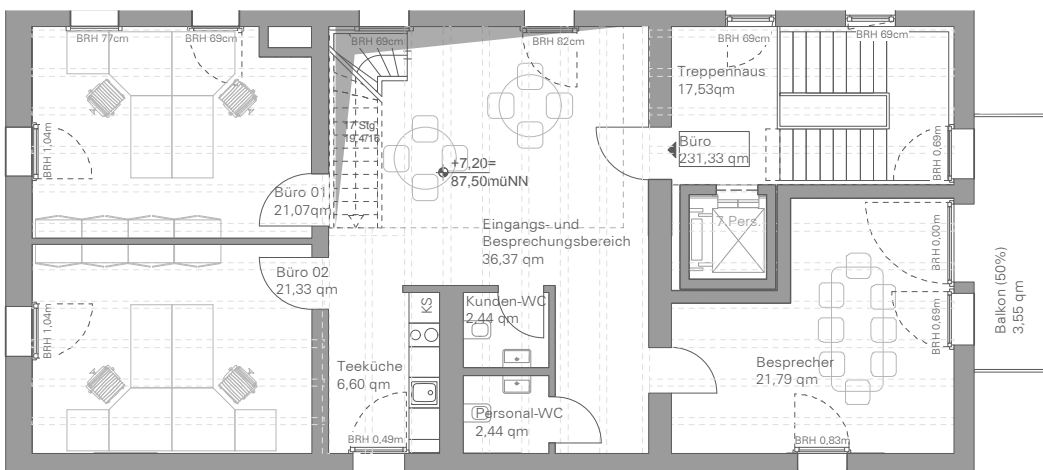
GEWERBE 1



ca. 111 qm

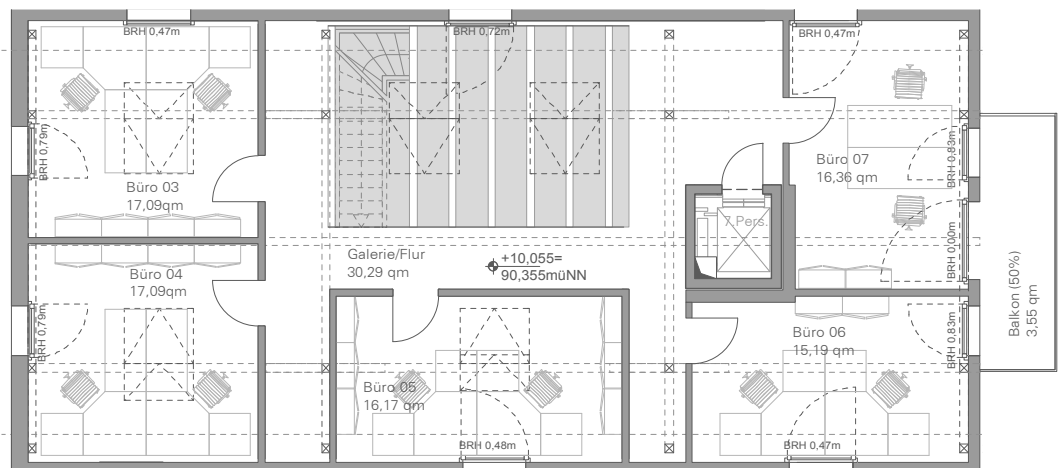


GEWERBE 2



2.OG

Gewerbefläche gesamt (2.+3.OG) ca. 225qm



3.OG