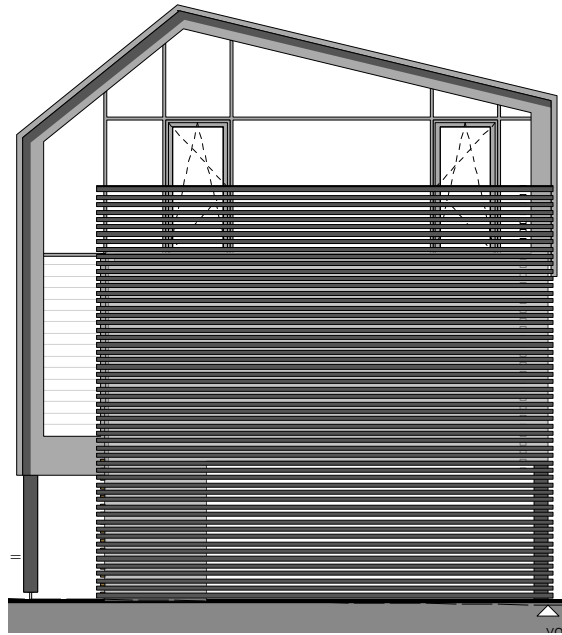
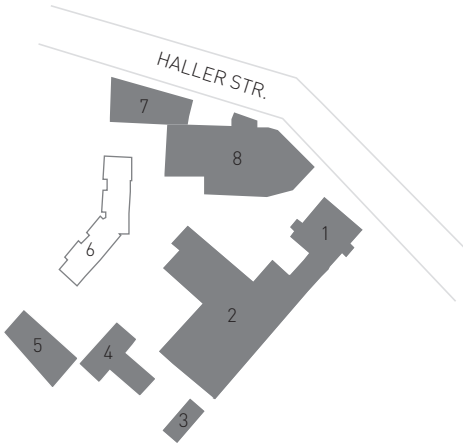
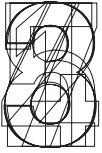


AN DER MANUFAKTUR

6 Alte Landwirtschaft
Neubau von vier Stadthäusern
Ansichten





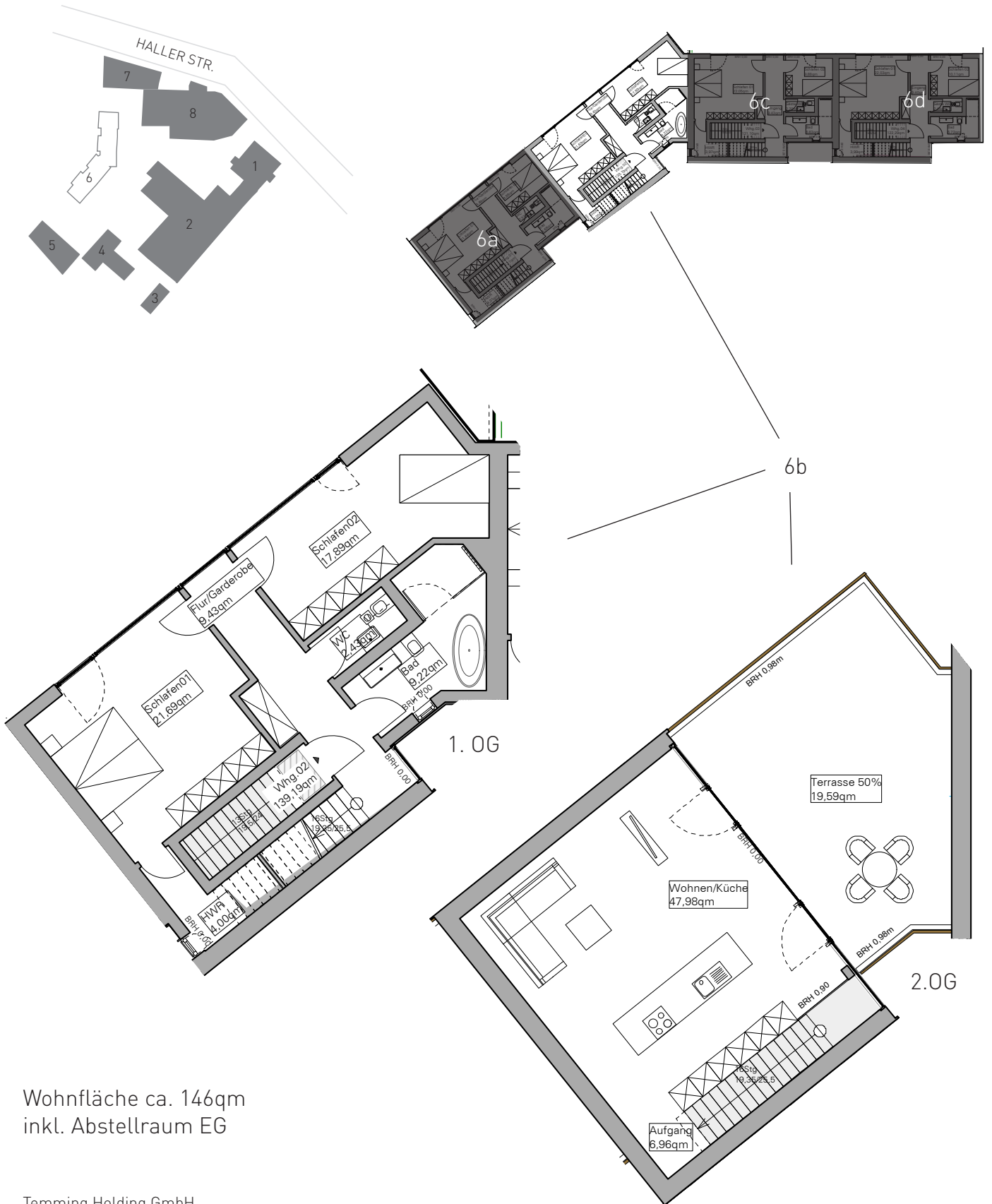
AN DER MANUFAKTUR

6 Alte Landwirtschaft

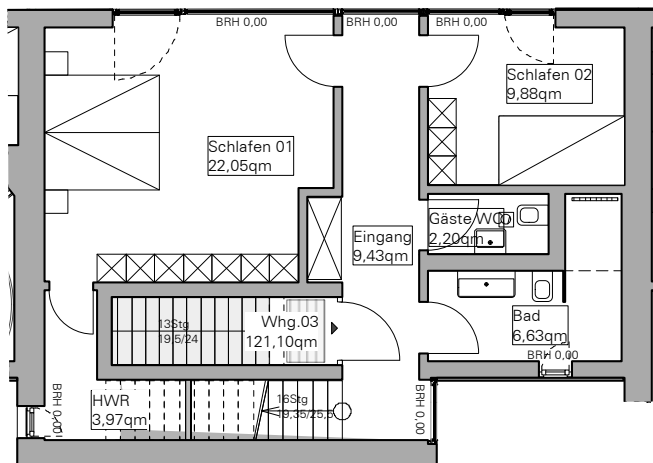
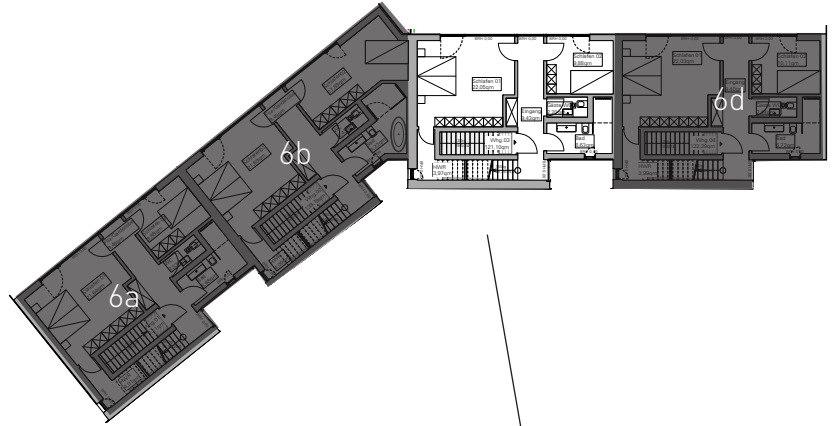
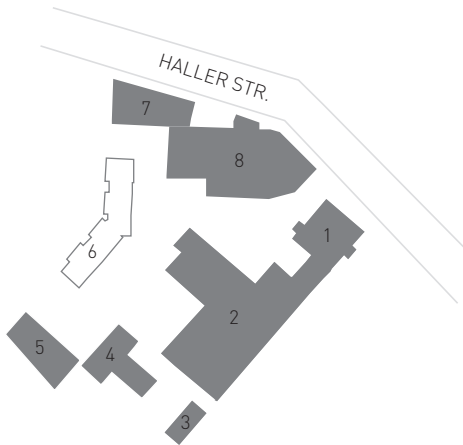
Neubau von vier Stadthäusern

Wohneinheit 6b | 1. + 2.OG

Fertigstellung voraussichtlich Q3/2017

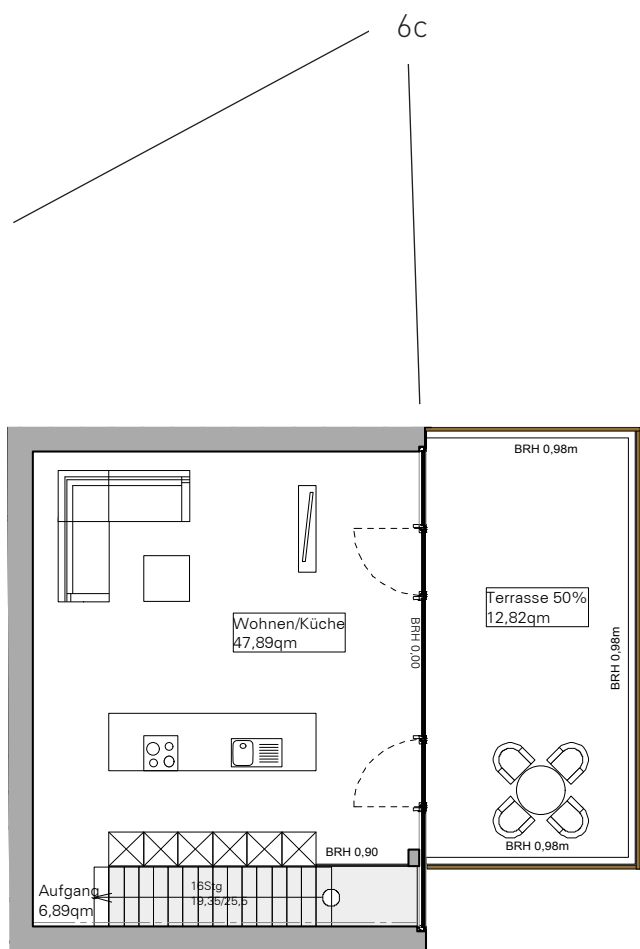


Wohnfläche ca. 146qm
inkl. Abstellraum EG



1. OG

Wohnfläche ca. 126qm
inkl. Abstellraum EG



2.OG



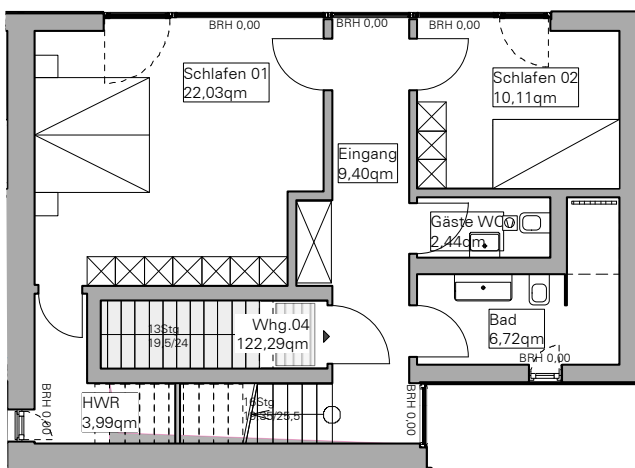
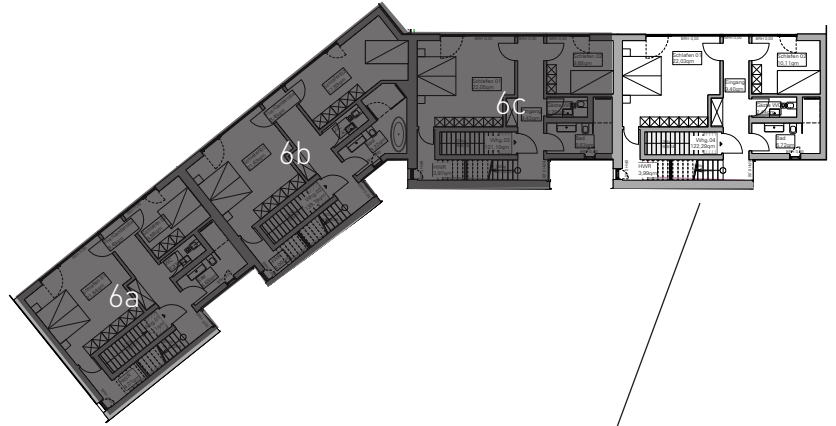
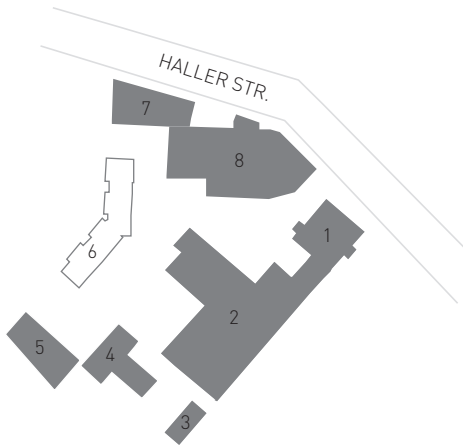
AN DER MANUFAKTUR

6 Alte Landwirtschaft

Neubau von vier Stadthäusern

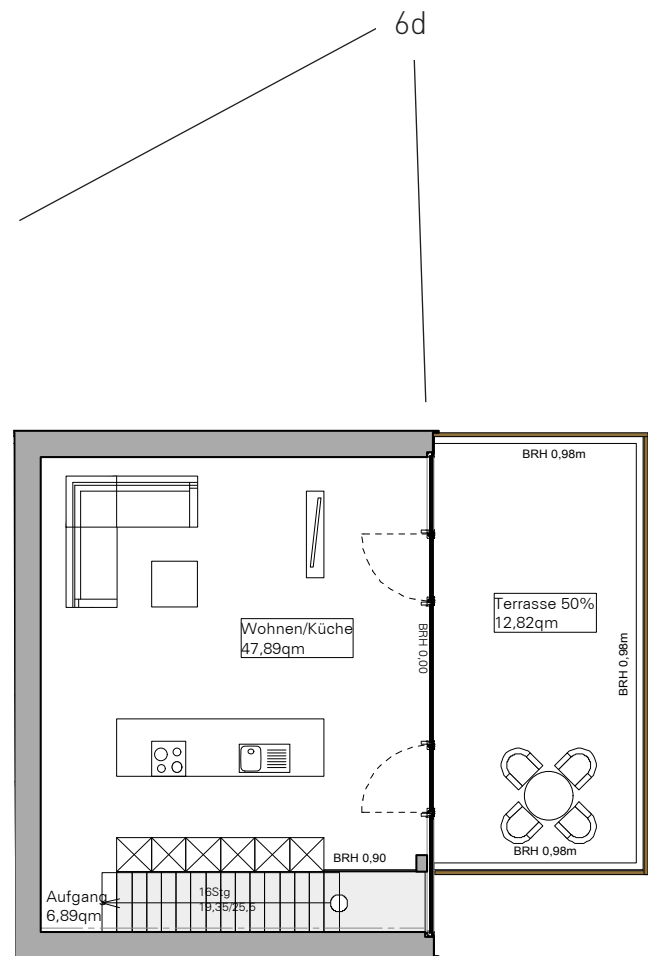
Wohninheit 6d | 1. + 2.OG

Fertigstellung voraussichtlich Q3/2017



1. OG

Wohnfläche ca. 129qm
inkl. Abstellraum EG



2.OG